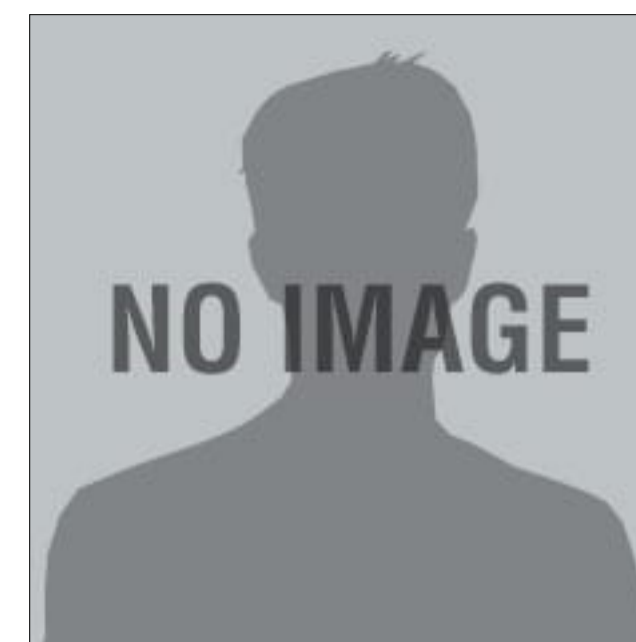


SOLD!! 102.5+/-acres Gorgeous Mountain Property Bordering Holly Flat Creek

Address: 102.5 Browns Trace Road, South Pittsburg, Tennessee



Brad Shurett

256-599-8153 (cell)

bshurett@mossyoakproperties.com

Acreage: 102.50

Price: \$450,000

County: Marion

MOPLS ID: 49642

GPS Location: 35.033133 X -85.845332

102+/- acres of gorgeous mountain property bordered by Holly Flat Creek on three sides! Boasting long range views, this tract has tons of wildlife, and is set up to be a hunter's dream. It's been managed intensely for deer and turkey since 2013. Pictures show the quality of this deer herd, and I've yet to find a tract with such a large population of wild turkey. There's a 30x30 pole barn for dressing game and an off grid cabin wired for a generator and a wood burning stove. . Whether you're looking for a mountain getaway or would like to build a permanent residence, this property really offers it all.

SOLD!! 102.5+/-acres Gorgeous Mountain Property Bordering Holly Flat Creek

